

**ITINERARY: African Luxury Safari**  
**Bush Only Safari on Three Reserves**

**Burnt Pine -safari**

(B): Breakfast; (BB): Bed & Breakfast; (L): Lunch;  
(D): Dinner; (b): Bed only

**Day 1,**

Depart from a gateway city, either Atlanta, Washington Dulles, or New York's JFK to Johannesburg. Delta has non-stop service from Atlanta. South African Airlines has non-stop service from JFK, the Dulles flight stops in route. **Overnight flight except JFK**

**Day 2,**

The JFK flight arrives early enough to connect to bush destinations, the others don't. The Delta flight and the SAA Dulles flight arrive in Johannesburg, South Africa at about 5PM. South Africa is six or seven hours ahead of us, depending on daylight savings time. There is no Visa required for US Citizens. Depending on the budget, there are several very close by hotel options. Or, you can connect to Cape Town tonight, but you will arrive at the hotel about 10PM, It makes for a very long travel day.

**Garden Court (BB) or Intercontinental Hotel (BB)**

**Day 3,**

This morning take a flight to one of the bush strips, or to a commercial airport either Hoedspruit or Nelspruit depending on where you start your Safari. All our recommended camps/lodges offer fantastic game viewing on private reserves. There are no wrong choices, so we have chosen three that make a nice and varied circuit. You will arrive in time for an afternoon game drive. Monwana is in the Thornybush Private Game Reserve, and is a "Four Star" graded property.

**Monwana (BBLD)** Access is from Hoedspruit

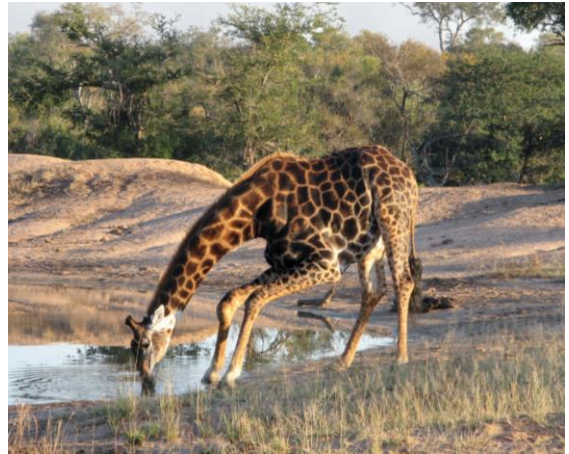


One of only Five Monwana Suites

**Day 4,**

Wake up this morning to tea and toast, usually before the sun is up. It's then into a waiting open vehicle with a game ranger and tracker exploring the reserve and looking for the "Big Five". After the drive you will return to the lodge for a full breakfast. There is probably time after breakfast for a game walk led by your ranger, or you can just relax by the pool. After lunch and a siesta you will be offered High Tea prior to your afternoon game drive. Each day's drive will be different based on what the animals are up to!

**Monwana (BBLD)**



**Day 5,**

After a morning game drive and breakfast you will transfer by road to your next bush camp. This camp is located in the northern Sabi Sands Private Game Reserve. It's adjacent and open to the famed Kruger National Park. Here you will meet another ranger who knows the bush and where to find Africa's "Big Five" Lions, Elephants, Leopards, Rhino, & Buffalo. Late afternoon you will have stopped for sundowners (drinks) before returning to the camp after dark.

**Arathusa (BBLD)**



Close enough?

**Day 6,**

Another day featuring two daily game drives. The terrain is different from Thornybush, but there is plenty

of game, especially the big cats. On my last visit we encountered a pack of painted African hunting dogs.  
**Arathusa (BBLD)**

#### Day 7

After a morning game drive and breakfast you will transfer by road to your final bush camp. This camp is located in the middle of the Timbavati Private Game Reserve. It's a luxury tented camp. Don't let the word tent fool you, it has all the amenities. In addition this is a fully inclusive camp with an open bar. The game viewing is excellent, and you will be well looked after in camp.

#### Tanda Tula (BBLD)



One of 12 Tanda Tula Tented Camp Accommodations

#### Day 8

After an early morning wake-up, and tea and toast, it's off to the bush looking for lion, leopard, elephant, and buffalo. In addition to excellent game viewing the Tanda Tula manages to through in a few surprises that I don't intend to spoil. It's a great way to cap off your African Safari.

#### Tanda Tula (BBLD)



The only bush animal with its mammary glands in the front

#### Day 9,

Today, after the morning game drive and brunch, you will transfer back to Johannesburg from Hoedspruit. In Johannesburg you will connect to your flight home.

#### Overnight flight

#### Day 10,

All flights arrive early morning in the US where you will clear Immigration and Customs.

**Price:** Please check with us for current pricing. The price will be based on your choice of accommodations, and the exchange rate at the time of booking. Prices are usually based per person sharing. Single supplements will apply.  
[chuck@burntpine-safari.com](mailto:chuck@burntpine-safari.com) (404) 457-6581

#### Included in the final price:

10 days, 7 night's accommodations, all breakfasts, 6 dinners, 6 lunches. Daily laundry service is available at the bush camps, and included at Tanda Tula. All the transfers and tours per the above itinerary are included. A 50% deposit is due to book the safari, with the balance due 90 days prior to departure.

**Not included:** are long haul international air tickets from the US, nor any internal flights required to reach the bush camps. Departure taxes, if any and items of a personal nature such as gratuities, phone calls, and meals not specified in the above will not be included.

**Add-ons:** it is easy to add a visit to Victoria Falls to this itinerary. Doing so will add three more days to your Safari.



Victoria Falls is one of the Seven Wonders of the World